

Who am I?

- BA Linguistics & CS, UCLA
- MS CS HCI, Stanford
- LLM + AI Safety
FAR AI Communications
AISafety.info + chatbot
- Google WTM Ambassador

* DISCLAIMER ideas presented here are my own



LLM Overview: Tracing Origins

- Transformers
- Large Language Models
- Pre-training vs Fine-tuning

LLMs in AI Safety: Charting a Safer Future

- What is AI Safety?
- Examples of Technical Research
- Resources

Terminology

AI: Artificial Intelligence

ML: Machine Learning

LLM: Large Language Model

NLP: Natural Language Processing

GPT: Generative Pretrained Transformer

Transformers: Neural network leading to LLMs

RLHF: Reinforcement Learning from Human Feedback

Natural Language
Processing [NLP]:
**Computers can
speak & understand
human languages**



Pre-1990s: Rule-based Expert Systems



1990s-2000s: **Statistics & Probabilities**



**You shall know a
word by the
company it keeps**

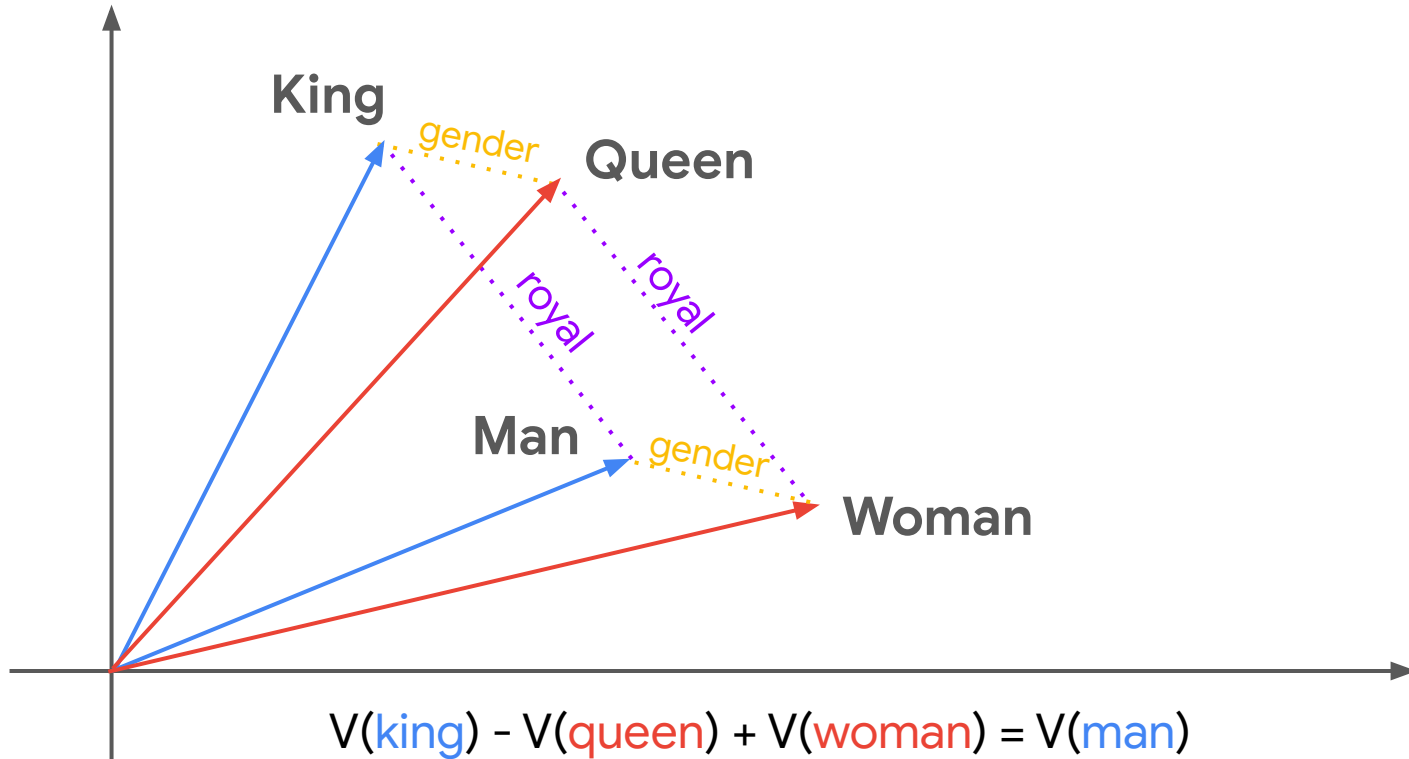
J.R. Firth, Linguist



2010s:
**Rise of Deep Learning
and Neural Networks**



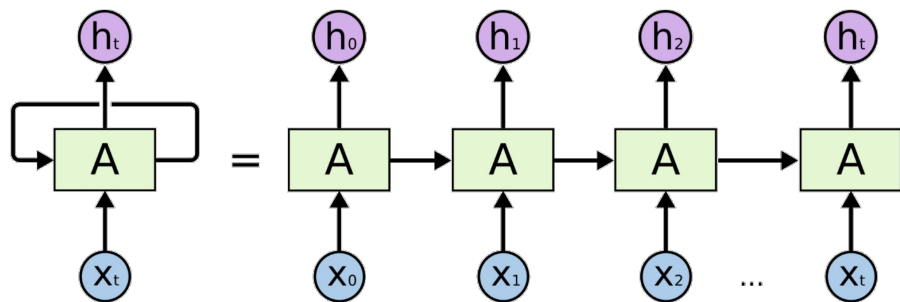
2013: Word2Vec Embeddings



2013: Word2Vec Embeddings

Analogies	Word Pair 1		Word Pair 2	
Man-Woman	king	queen	man	woman
Capital city	Athens	Greece	Oslo	Norway
City-in-state	Chicago	Illinois	Sacramento	California
Opposite	possibly	impossibly	ethical	unethical
Comparative	great	greater	tough	tougher
Nationality adjective	Switzerland	Swiss	Canada	Canadian
Past tense	walking	walked	swimming	swam
Plural nouns	mouse	mice	dollar	dollars

2010s: Neural Networks RNN, GRU, LSTM



Early Neural Networks

- Slow & Forgetful



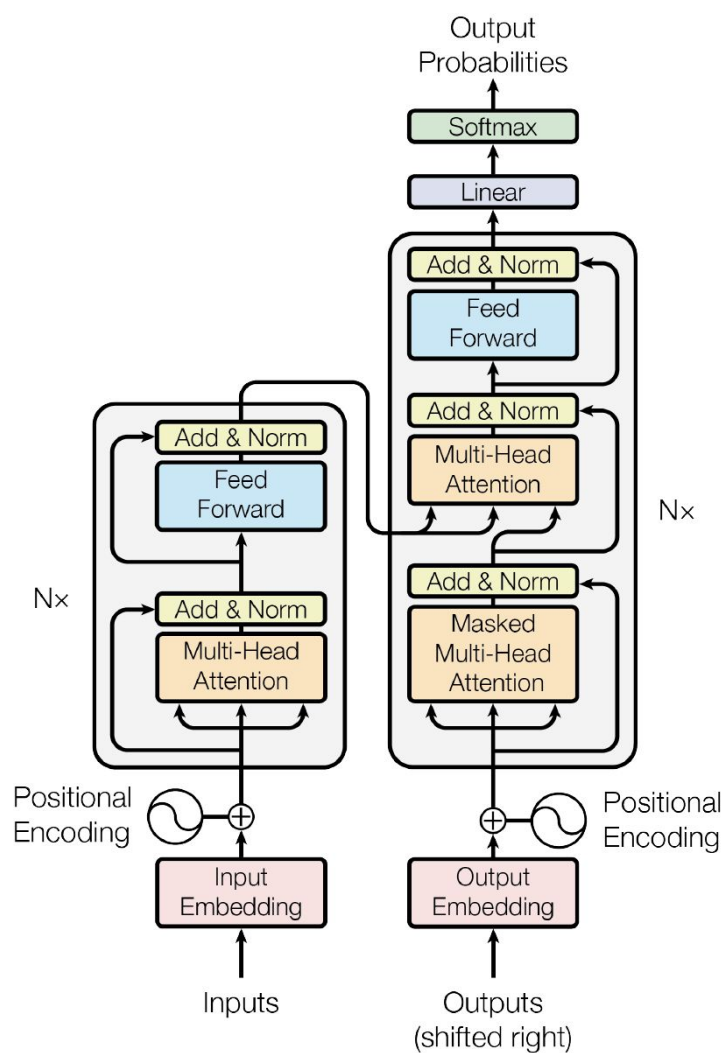
2017: Transformers

- Self-attention Mechanism
- Data hungry
- Parallel processing
GPU-optimized



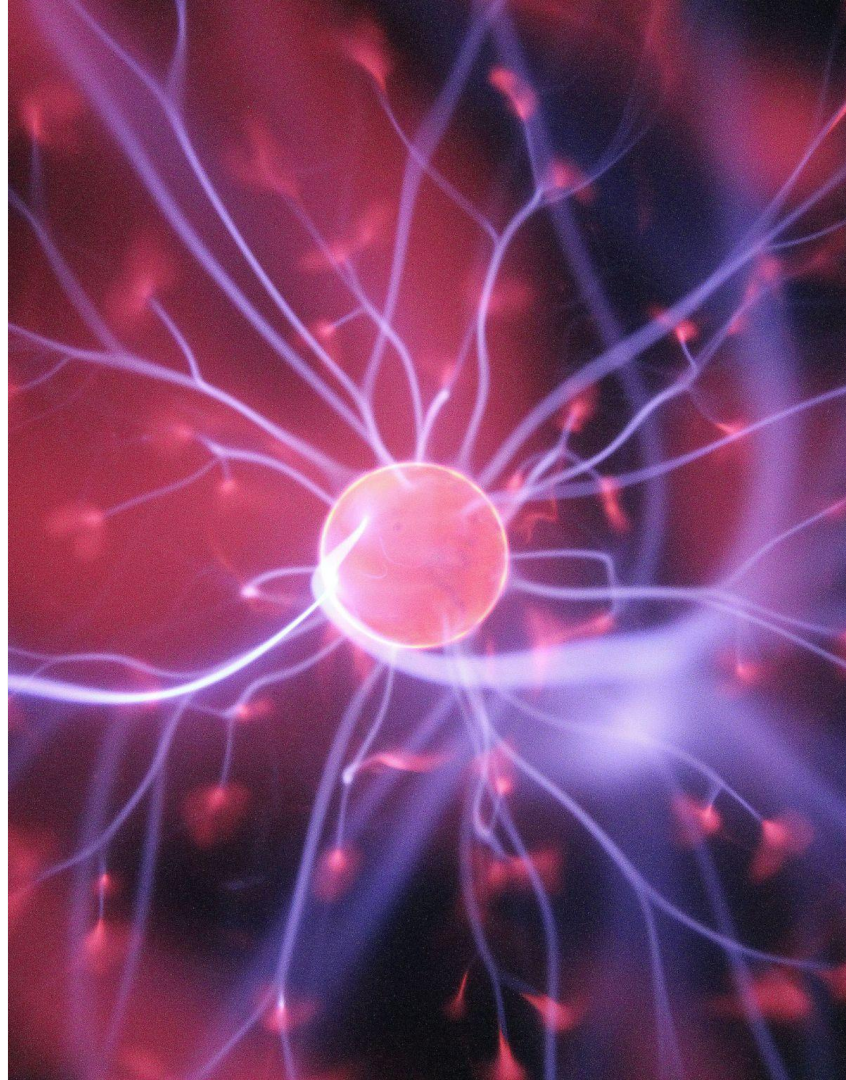
Transformer Architecture

Encoder + Decoder

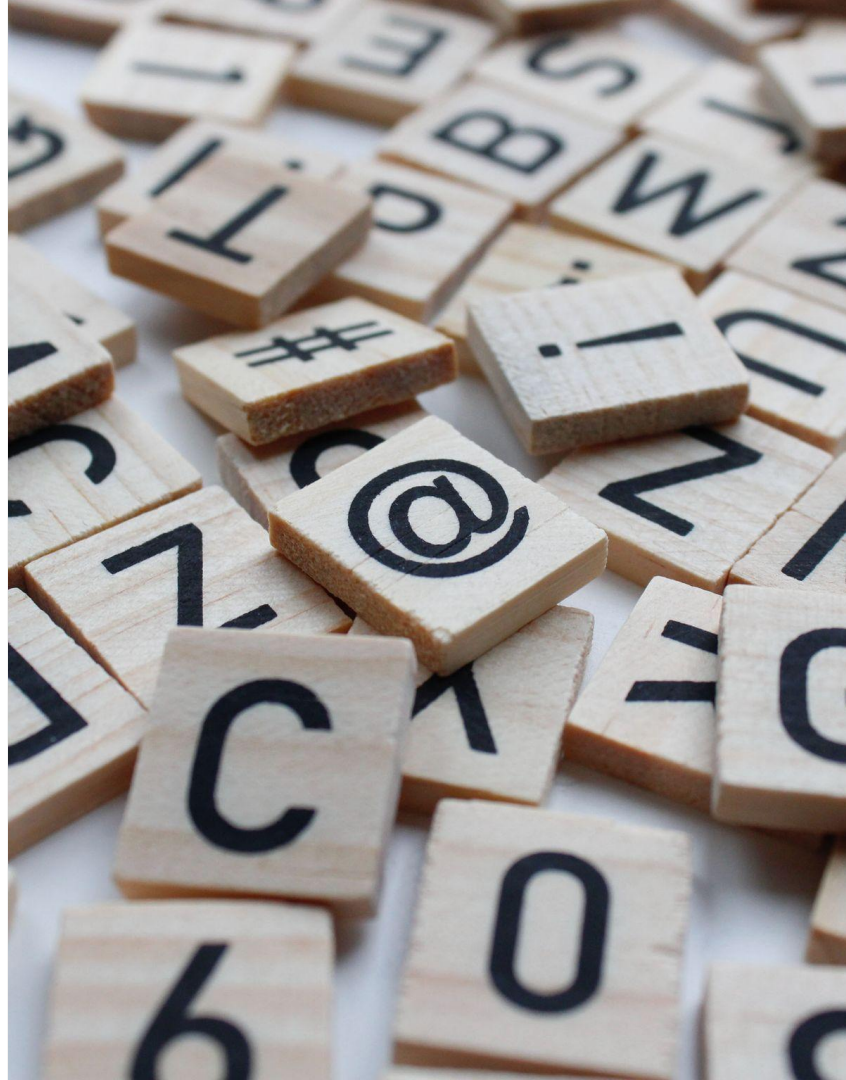


Rise of LLMs

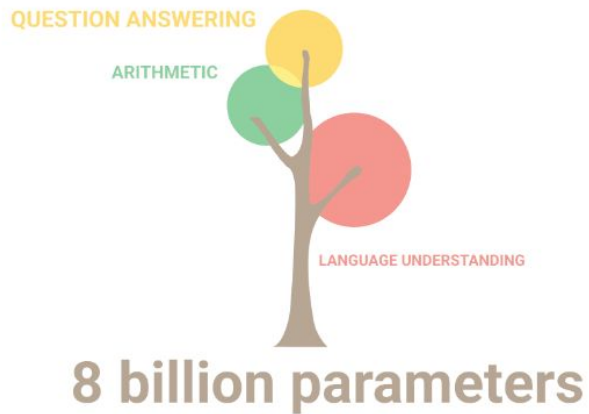
>1 billion neurons



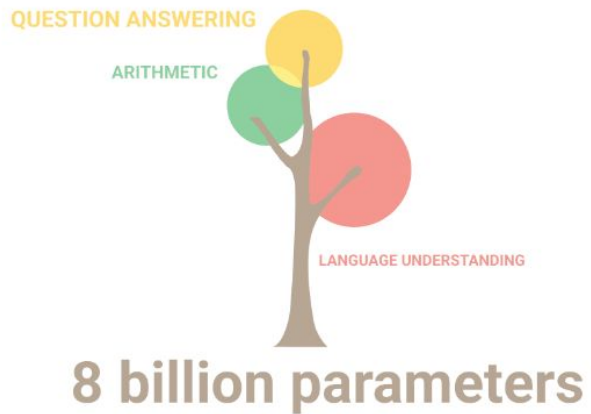
Trained for **Next Word Prediction**



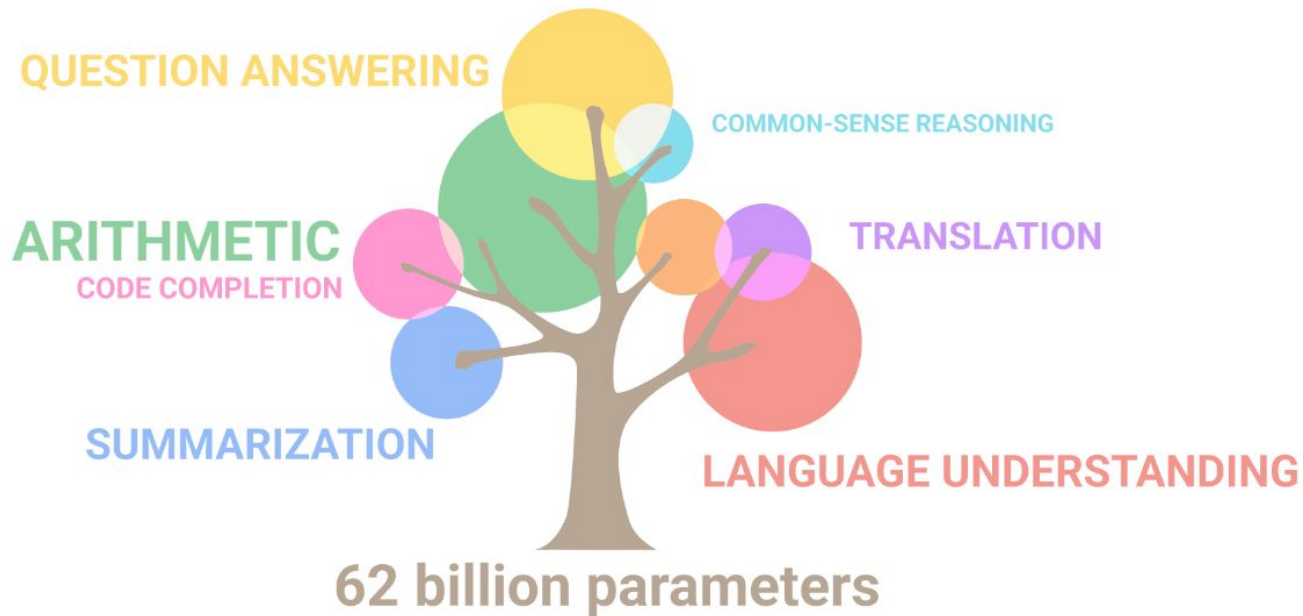
Emergent Abilities



Emergent Abilities



Emergent Abilities



Pre-trained Base

Generalist

VS

Fine-tuned Models

Specialists



RLHF:

Reinforcement Learning from
Human Feedback

Fine-tuned

- Follow Instructions
- Conversations



What's Next?

- Multimodal
- Open-source
- Agents



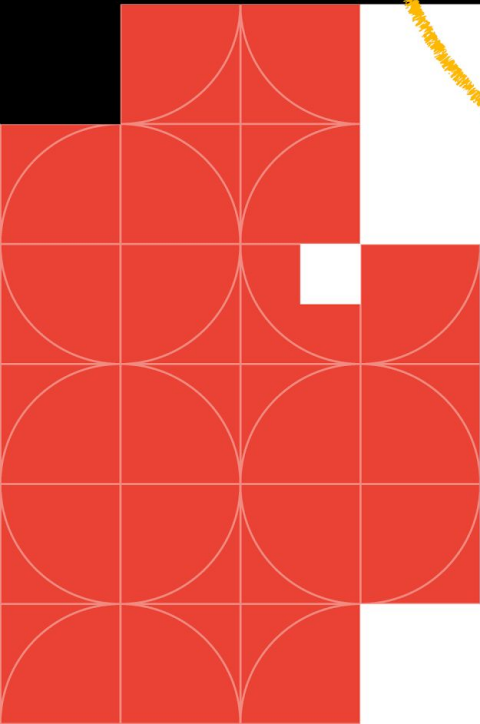
```
Text('Section Title',  
style: TextStyle(  
color: Colors.red[200],  
),  
),  
),  
s.star,  
r: Colors.red[500],  
Text('23'),
```

devfest



LLMs in AI Safety

Charting a Safer Future



Some concrete
examples of
technical safety
research...



Value Alignment

- RLHF

OpenAI's Alignment

- Sycophancy

Agreeable but untrue



Evaluations

- Inverse Scaling

Bigger isn't always better

- Jailbreaking

Guardrails vs Attack suffix



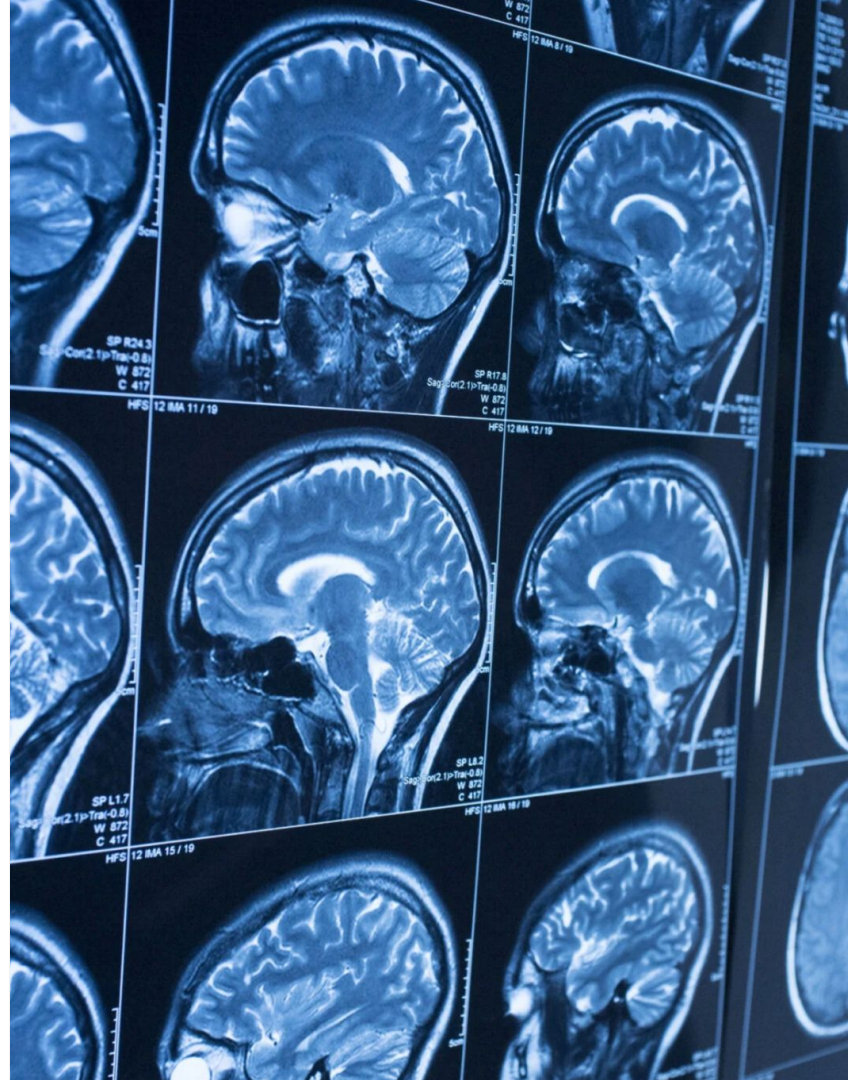
Interpretability

- Meaningful Features

Topics, i.e. legal text, space, time

- “Lie Detector”

Hallucination & Deception



Resources

bit.ly/cheng2-slides-2023-11-25

1. **AI Explained videos on AI development + safety**
youtube.com/@aiexplained-official
2. **80,000 Hours career advice + job board**
80000hours.org/problem-profiles/artificial-intelligence
3. **AI Safety.info FAQs**
AISafety.info
4. **AI Safety Fundamentals online curricula**
AISafetyFundamentals.com
5. **Alignment Forum share research + discussions**
AlignmentForum.org



**Embrace
Safely**




```
// You'll need  
// com.google.  
listRef.listAll  
.addOr  
prefixes.  
// All  
// You  
}  
it  
each { item  
the items  
}  
}
```

devfest



ChengCheng Tan

ccstan99@gmail.com

 cheng2-tan

 @cheng2_tan

 Google Developer Groups

